

Imagery Date: Apr 21, 2007

50°49'43.14" N 0°57'02.99" W elev 0m

© 2011 Infoterra Ltd & Bluesky

© 2010 Google
Eye alt 3.48 km

● Echo

● Kitts Folly

● Club

● ESSC ODM
● ESC ODM

● EMS

● Little Deep

● Church

● Fowley

● Walsh

2011 Course Card

Mark Riddington

● Wickor

● Sweare Deep

● Northney

● Shepherd

● Tye

● Pusinelli

● Marker

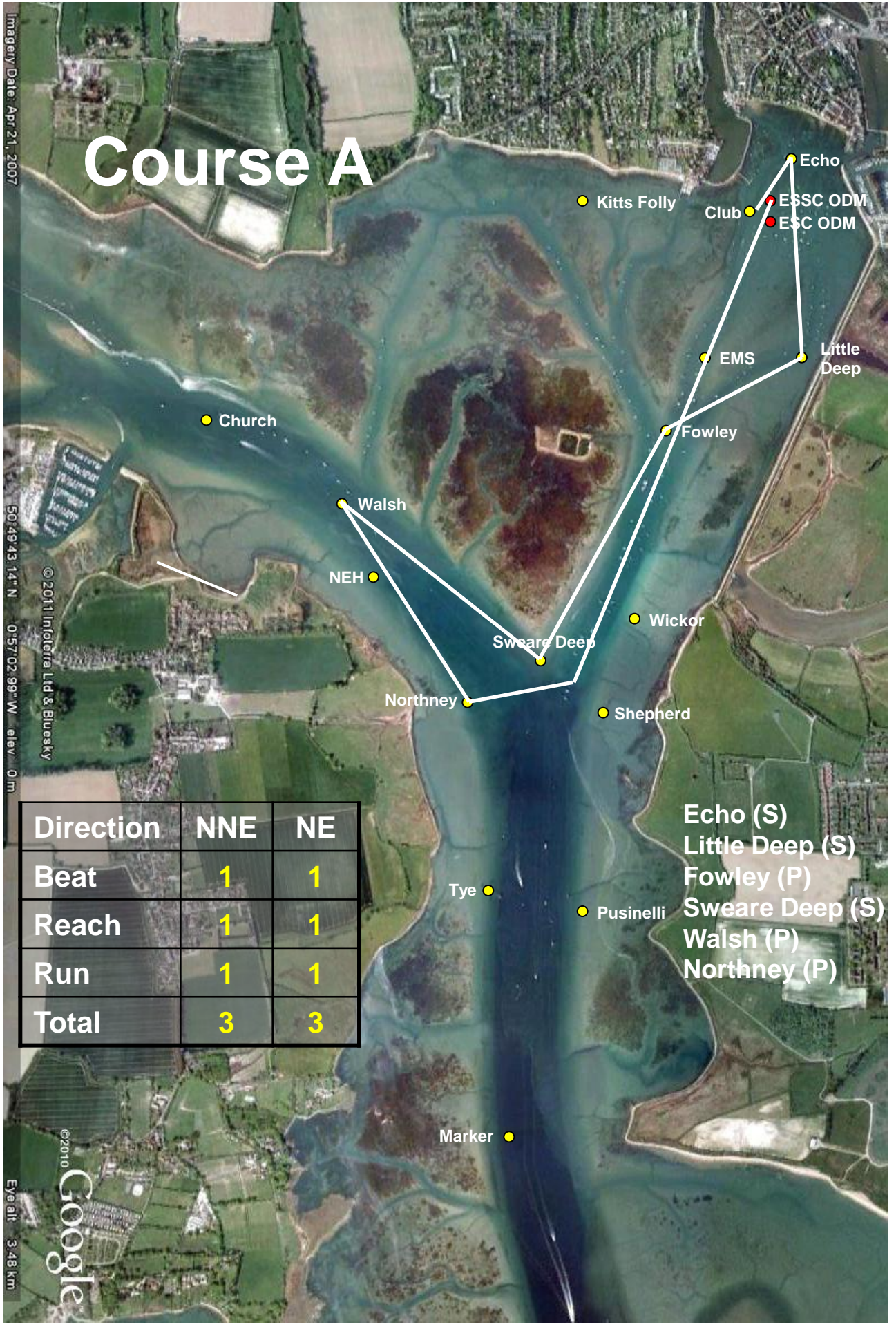


Objectives of the 2011 Course Card:

1. Each course to have a broadly equal split (in distance) of beating, reaching and running
2. To have courses that cover all wind directions, with more courses for the predominant winds directions
3. For predominant wind directions, a number of courses with differing distances
4. To maintain the 2006 average course distance of approx 5 miles



Course A



Direction	NNE	NE
Beat	1	1
Reach	1	1
Run	1	1
Total	3	3

- Echo (S)
- Little Deep (S)
- Fowley (P)
- Swears Deep (S)
- Walsh (P)
- Northney (P)

Imagery Date: Apr 21, 2007

50°49'43.14" N 0°57'02.99" W elev. 0m

© 2011 Infoterra Ltd & BlueSky

©2010 Google
Eye alt 3.48 km

Course B

Imagery Date: Apr 21, 2007

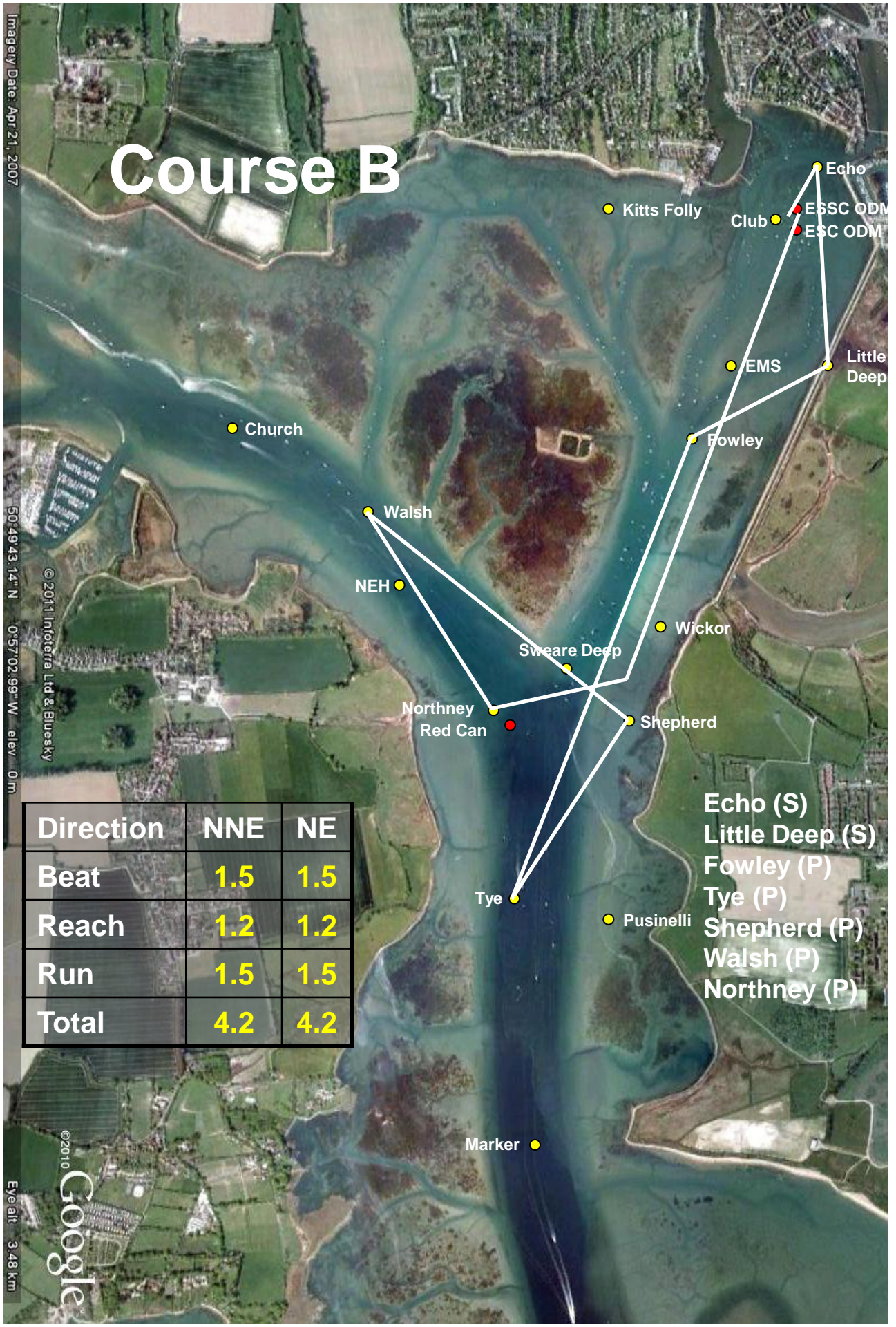
50°49'43.14" N 0°57'02.99" W elev. 0 m

© 2011 Infoterra Ltd & Bluesky

Direction	NNE	NE
Beat	1.5	1.5
Reach	1.2	1.2
Run	1.5	1.5
Total	4.2	4.2

Eye alt 3.48 km

©2010 Google



- Echo (S)
- Little Deep (S)
- Fowley (P)
- Tye (P)
- Shepherd (P)
- Walsh (P)
- Northney (P)

Course C

Imagery Date: Apr 21, 2007

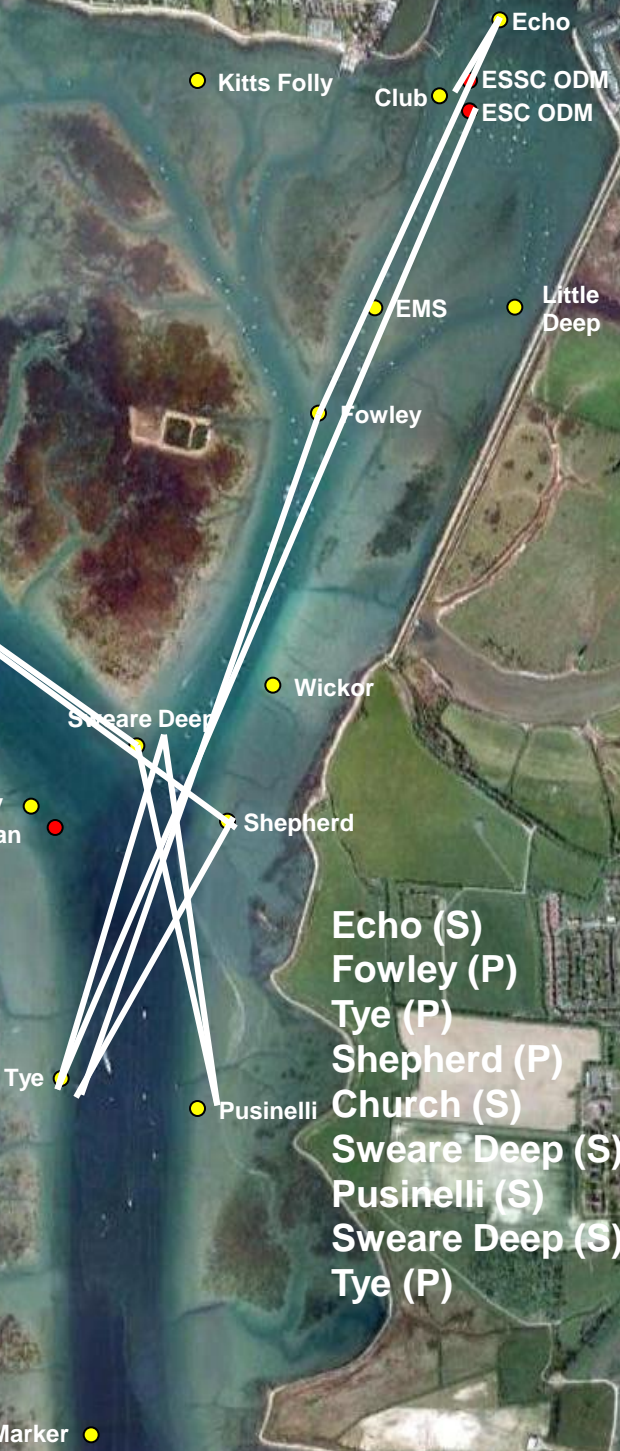
50°49'43.14" N 0°57'02.99" W elev. 0m

© 2011 Infoterra Ltd & Bluesky

Eye alt 3.48 km

©2010 Google

Direction	NNE	NE
Beat	2	2
Reach	2	2
Run	2	2
Total	6	6



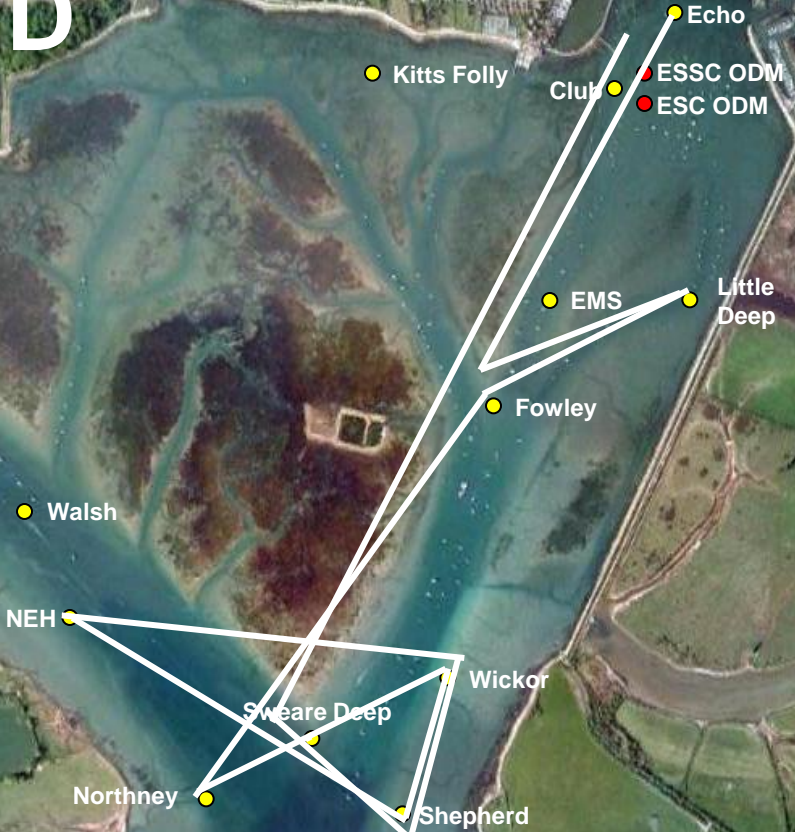
- Echo (S)
- Fowley (P)
- Tye (P)
- Shepherd (P)
- Church (S)
- Swear Deep (S)
- Pusinelli (S)
- Swear Deep (S)
- Tye (P)

Course D

Imagery Date: Apr 21, 2007

50°49'43.14" N 0°57'02.99" W elev: 0m

© 2011 Infoterra Ltd & Bluesky



- Echo (S)
- Fowley (P)
- Little Deep (S)
- Fowley (P)
- Northney (P)
- Wickor (S)
- Shepherd (S)
- NEH (S)
- Wickor (S)
- Shepherd (S)
- Sweare Deep (S)

Direction	ENE
Beat	2
Reach	1
Run	1
Total	4

Course E

Imagery Date: Apr 21, 2007

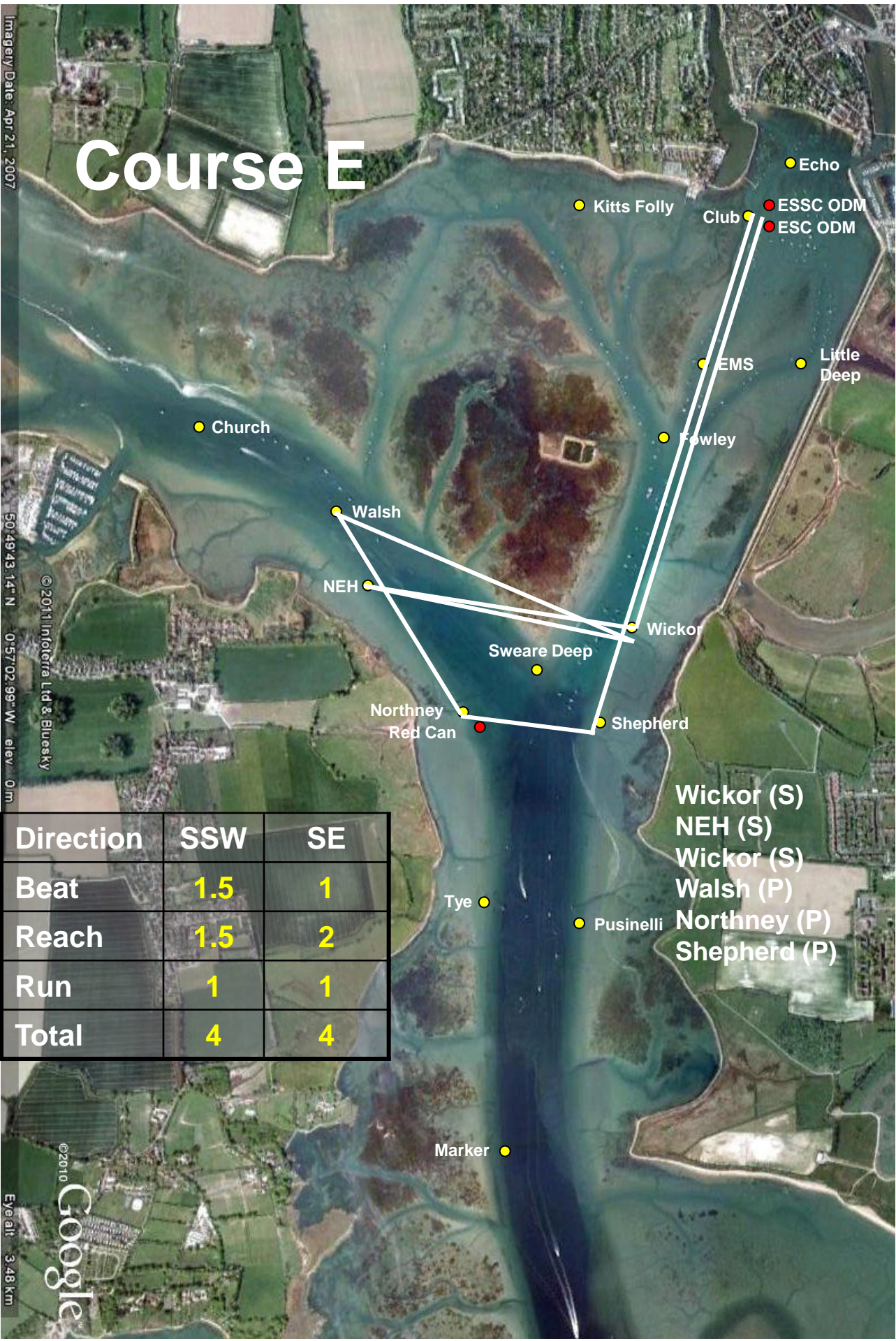
50°49'43.14" N 0°57'02.99" W elev: 0m

© 2011 Indaterra Ltd & Bluesky

Eye alt: 3.48 km

©2010 Google

Direction	SSW	SE
Beat	1.5	1
Reach	1.5	2
Run	1	1
Total	4	4



- Wickor (S)
- NEH (S)
- Wickor (S)
- Walsh (P)
- Northney (P)
- Shepherd (P)

Course F

Imagery Date: Apr 21, 2007

50°49'43.14" N 0°57'02.99" W elev: 0m

© 2011 Infoterra Ltd & Bluesky

Eye alt: 3.48 km



Direction	SE
Beat	1.5
Reach	2
Run	1.5
Total	5

- Wickor (S)
- Swear Deep (S)
- Walsh (P)
- Shepherd (P)
- Church (S)
- Northney (P)
- Shepherd (P)

Course G

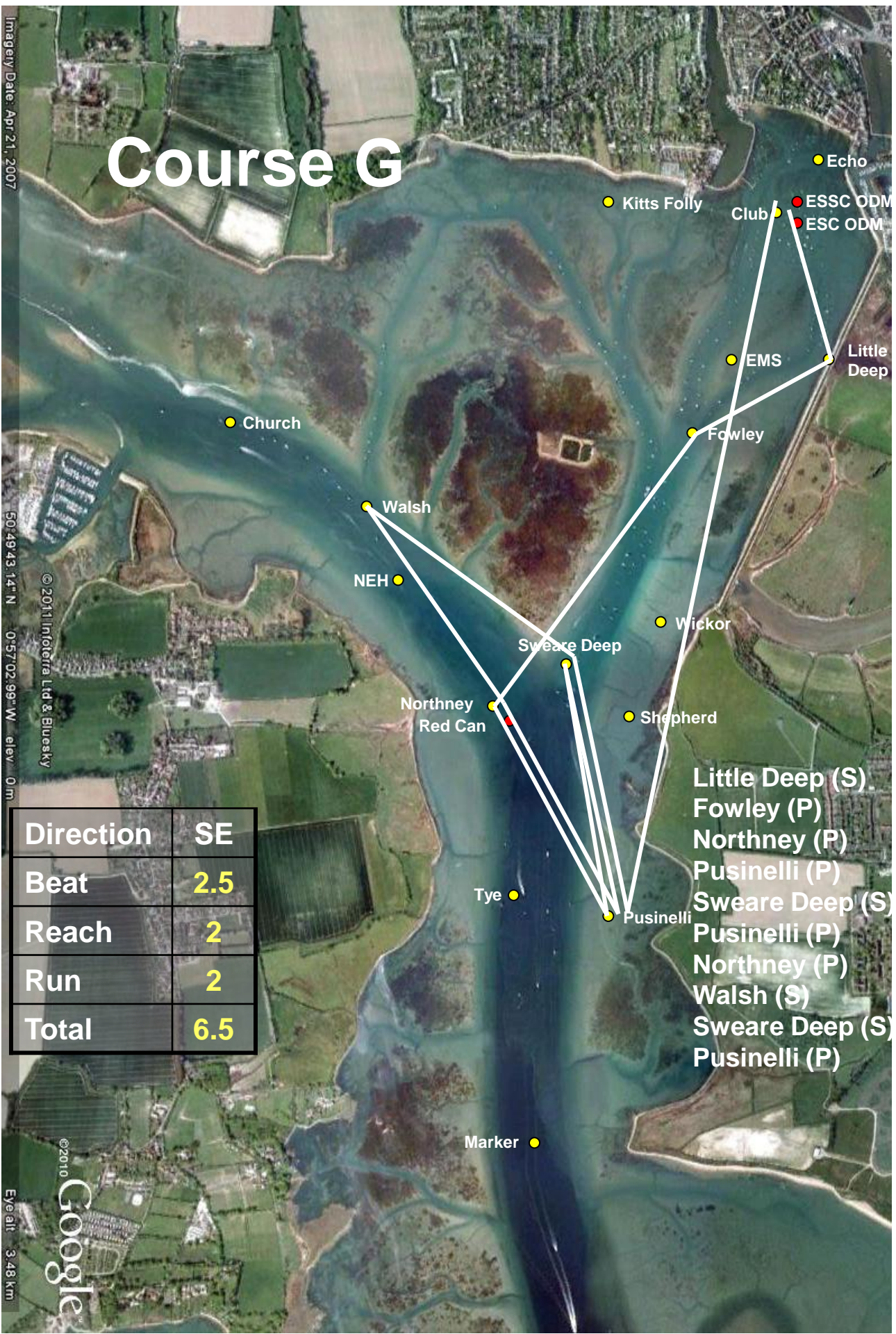
Imagery Date: Apr 21, 2007

50°49'43.14" N 0°57'02.99" W elev. 0m

© 2011 Infoterra Ltd & Bluesky

Direction	SE
Beat	2.5
Reach	2
Run	2
Total	6.5

© 2010 Google
Eye alt: 3.48 km



- Little Deep (S)
- Fowley (P)
- Northney (P)
- Pusinelli (P)
- Swear Deep (S)
- Pusinelli (P)
- Northney (P)
- Walsh (S)
- Swear Deep (S)
- Pusinelli (P)

Course H

Imagery Date: Apr 21, 2007

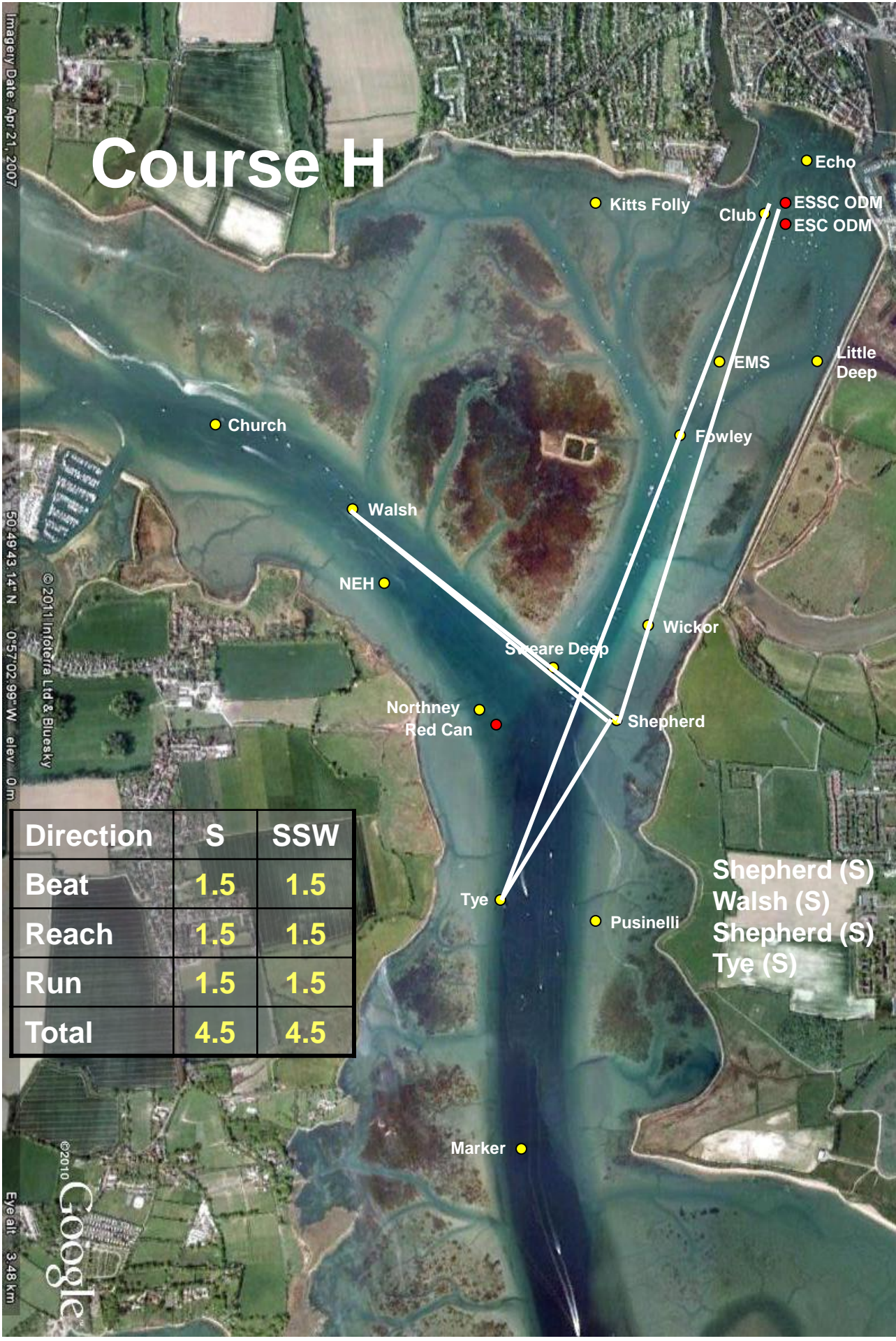
50°49'43.14" N 0°57'02.99" W elev: 0m

© 2011 Infoterra Ltd & Bluesky

Eye alt: 3.48km



Direction	S	SSW
Beat	1.5	1.5
Reach	1.5	1.5
Run	1.5	1.5
Total	4.5	4.5



- Shepherd (S)
- Walsh (S)
- Shepherd (S)
- Tye (S)

Course I

Imagery Date: Apr 21, 2007

50°49'43.14" N 0°57'02.99" W elev. 0m

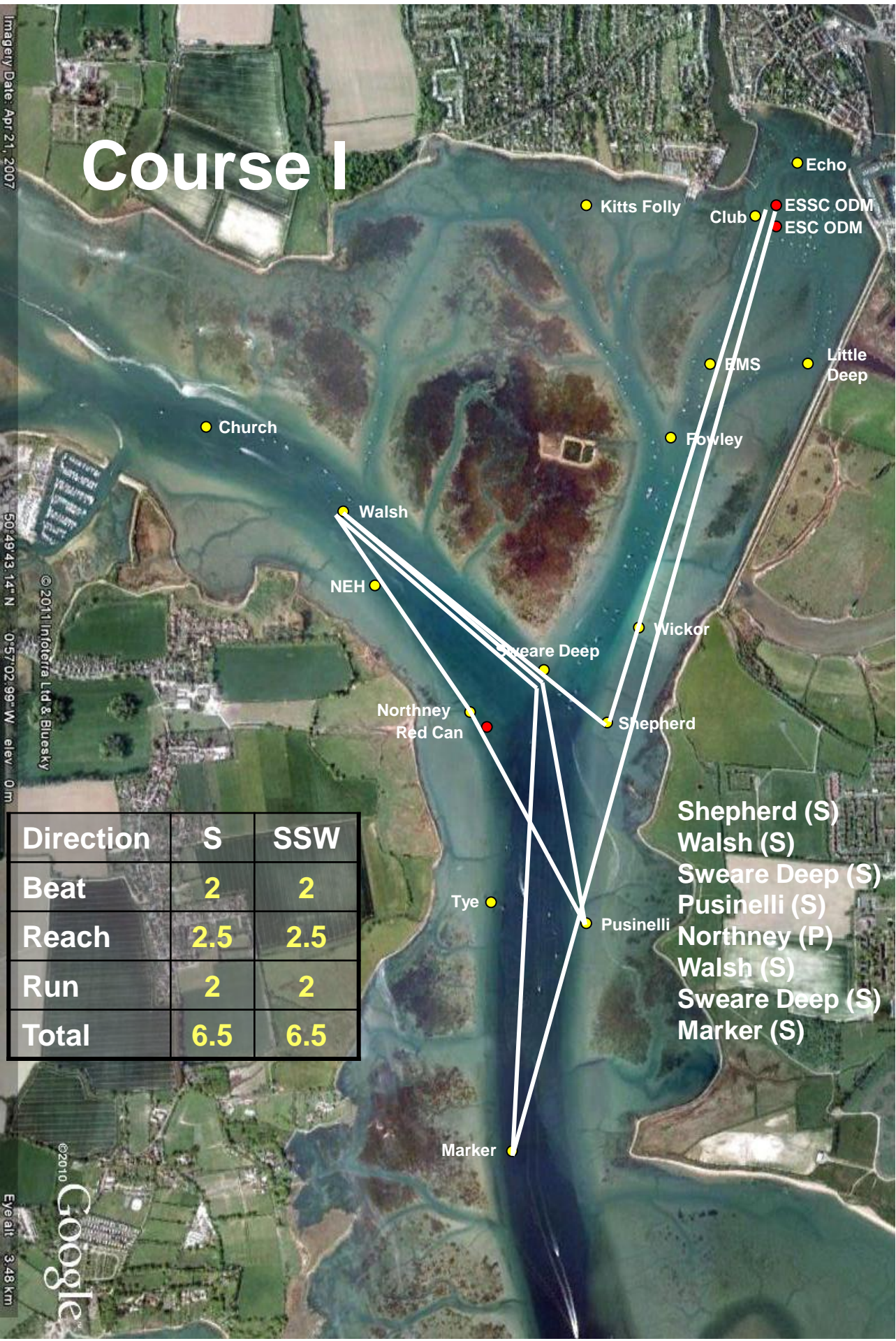
© 2011 Infoterra Ltd & Bluesky

Eye alt: 3.48 km

©2010 Google

Direction	S	SSW
Beat	2	2
Reach	2.5	2.5
Run	2	2
Total	6.5	6.5

- Shepherd (S)
- Walsh (S)
- Sweare Deep (S)
- Pusinelli (S)
- Northney (P)
- Walsh (S)
- Sweare Deep (S)
- Marker (S)



Course J

Imagery Date: Apr 21, 2007

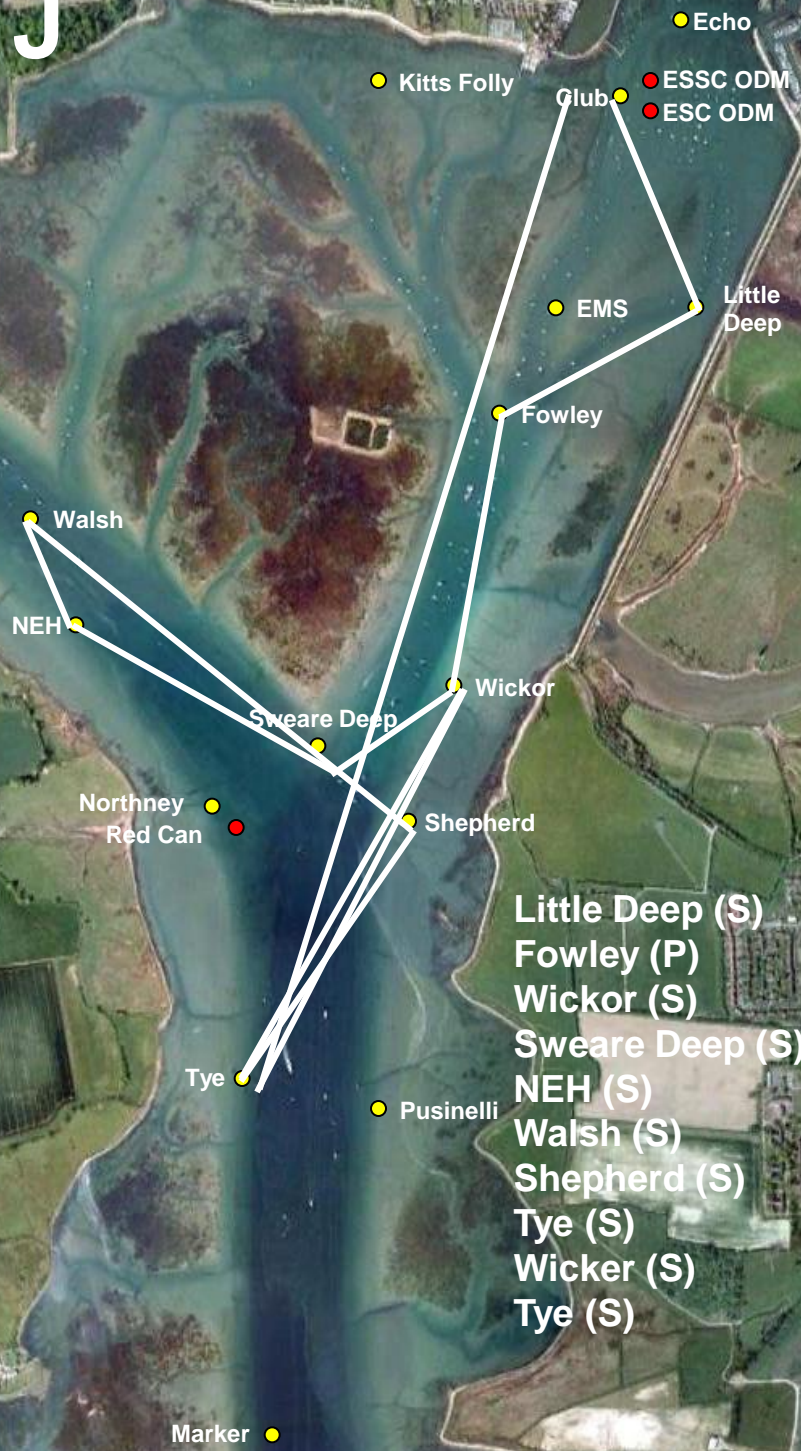
50°49'43.14" N 0°57'02.99" W elev 0m

© 2011 Infoterra Ltd & BlueSky

Eye alt 3.48km

©2010 Google

Direction	SW
Beat	2
Reach	2
Run	1.5
Total	5.5



- Little Deep (S)
- Fowley (P)
- Wickor (S)
- Swiare Deep (S)
- NEH (S)
- Walsh (S)
- Shepherd (S)
- Tye (S)
- Wicker (S)
- Tye (S)

Course K

Imagery Date: Apr 21, 2007

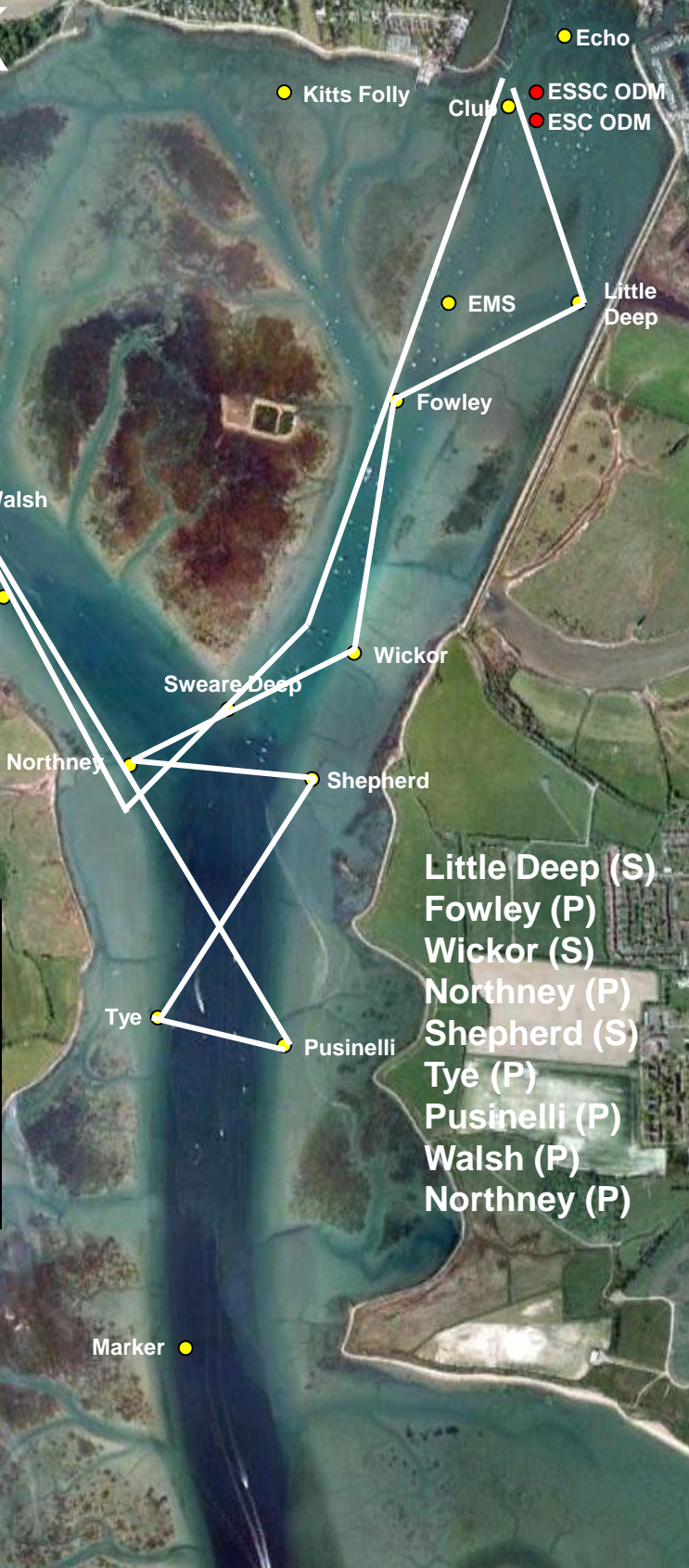
50°49'43.14" N 0°57'02.99" W elev. 0m

© 2011 Infoterra Ltd & BlueSky

Eye alt 3.48 km

©2010 Google

Direction	SW, SSW
Beat	1.5
Reach	1.5
Run	1.25
Total	4.5



Course L

Imagery Date: Apr 21, 2007

50°49'43.14" N 0°57'02.99" W elev: 0m

© 2011 Infoterra Ltd & Bluesky

Eye alt: 3.48 km

©2010 Google



Direction	SSW
Beat	2
Reach	2
Run	2
Total	6

- Swear Deep (S)
- Walsh (P)
- Shepherd (P)
- Echo (P)
- Line
- Swear Deep (S)
- Walsh (P)
- Shepherd (P)
- Echo (P)

Course M

Imagery Date: Apr 21, 2007

50°49'43.14" N 0°57'02.99" W elev. 0m

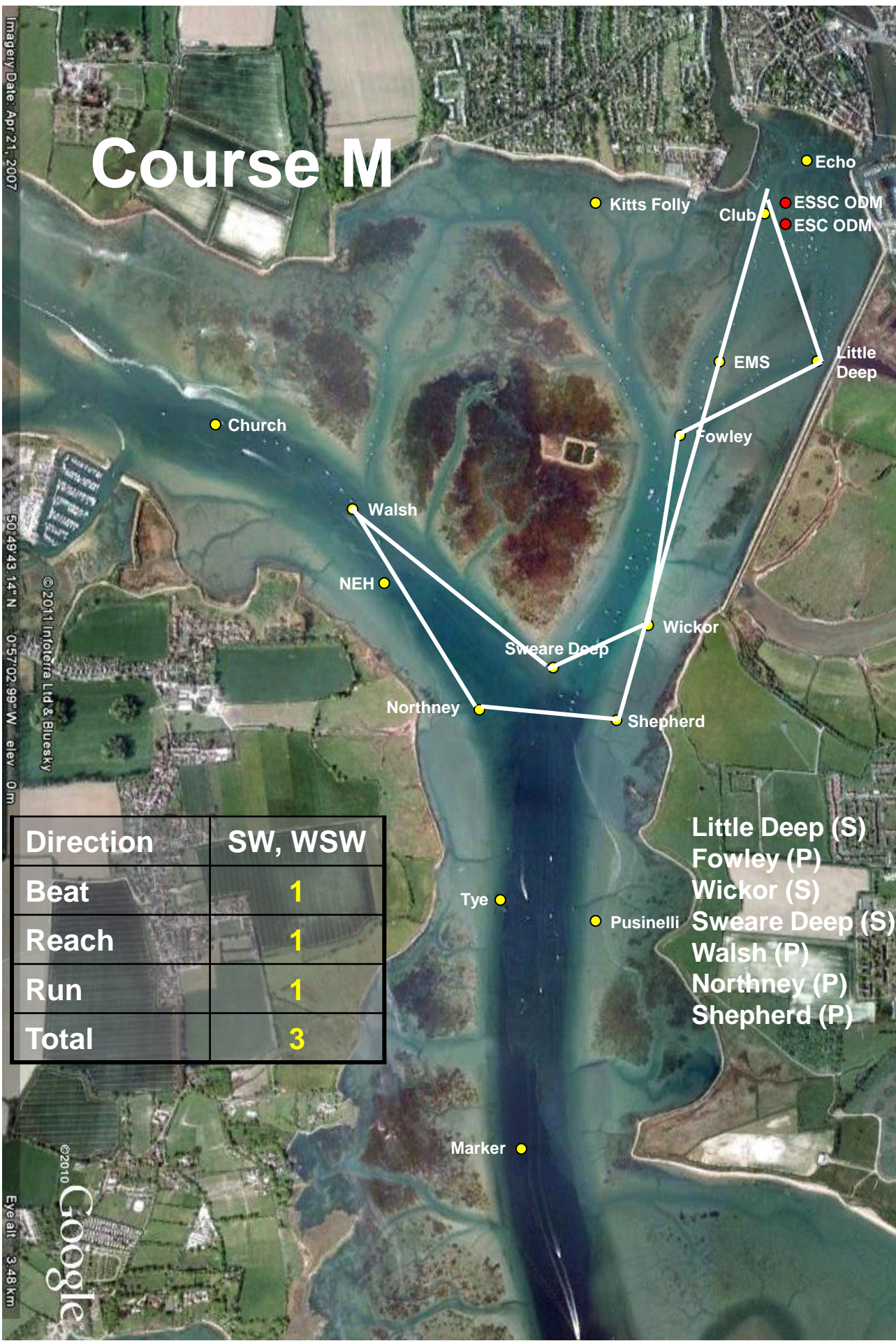
© 2011 Infoterra Ltd & Bluesky

Eye alt: 3.48 km



Direction	SW, WSW
Beat	1
Reach	1
Run	1
Total	3

- Little Deep (S)
- Fowley (P)
- Wickor (S)
- Sweare Deep (S)
- Walsh (P)
- Northney (P)
- Shepherd (P)



Course N

Imagery Date: Apr 21, 2007

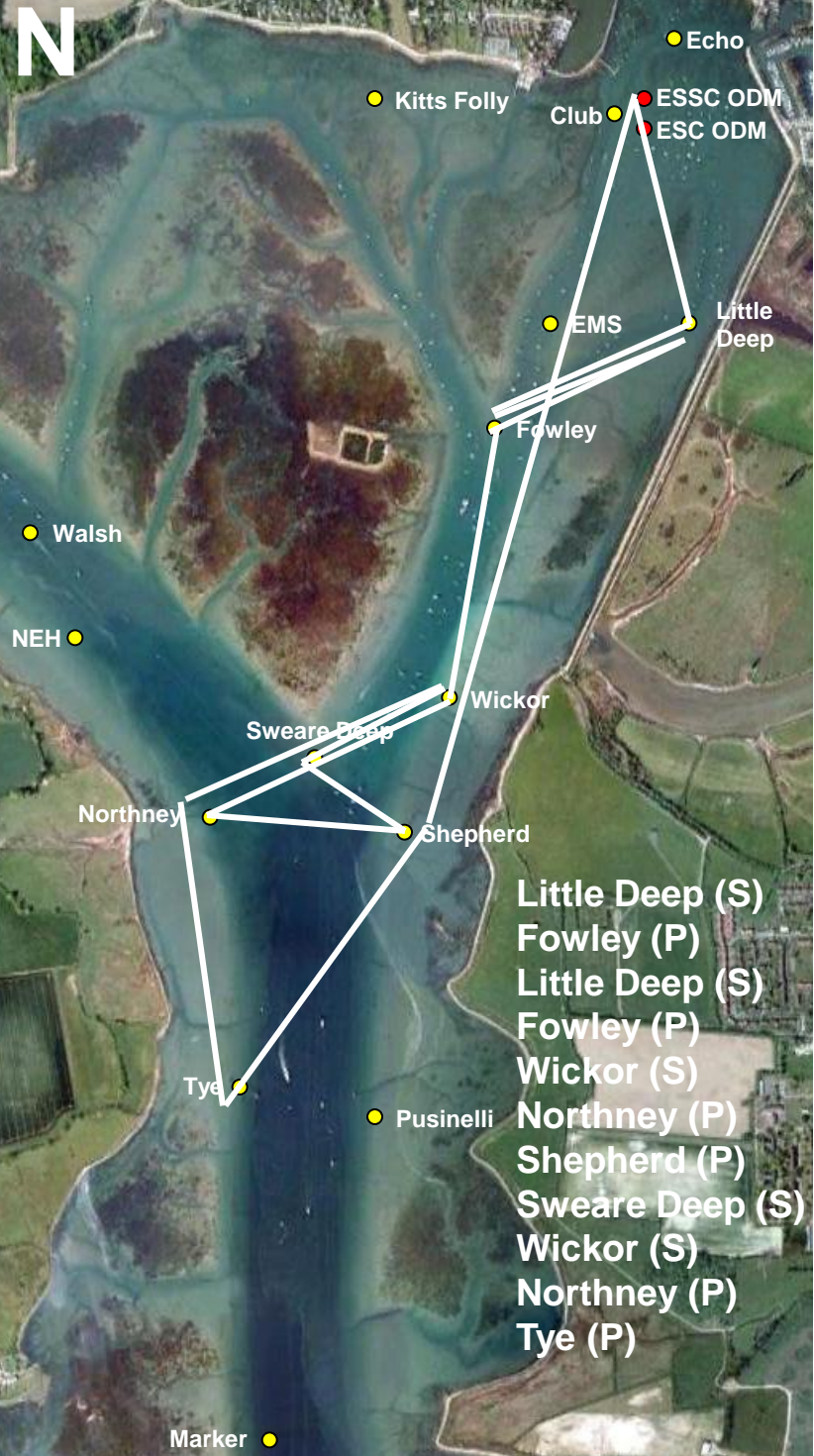
50.4943, 1.4° N 0°57.02.99° W elev. 0m

© 2011 Infoterra Ltd & Bluesky

Eye alt 3.48 km

©2010 Google

Direction	WSW
Beat	1.5
Reach	1.5
Run	1
Total	4.5



- Little Deep (S)
- Fowley (P)
- Little Deep (S)
- Fowley (P)
- Wickor (S)
- Northney (P)
- Shepherd (P)
- Sweare Deep (S)
- Wickor (S)
- Northney (P)
- Tye (P)

Course O

Imagery Date: Apr 21, 2007

50°49'43.14" N 0°57'02.99" W elev: 0m

© 2011 Infoterra Ltd & Bluesky

Eye alt: 3.48 km

©2010 Google



Direction	E	W
Beat	1	1
Reach	2	2
Run	1	1
Total	4	4

- Wickor (S)
- Walsh (S)
- Wickor (S)
- Northney (P)
- Shepherd (P)
- Northney (P)
- Shepherd (P)
- Sweare Deep (S)

Course P

Imagery Date: Apr 21, 2007

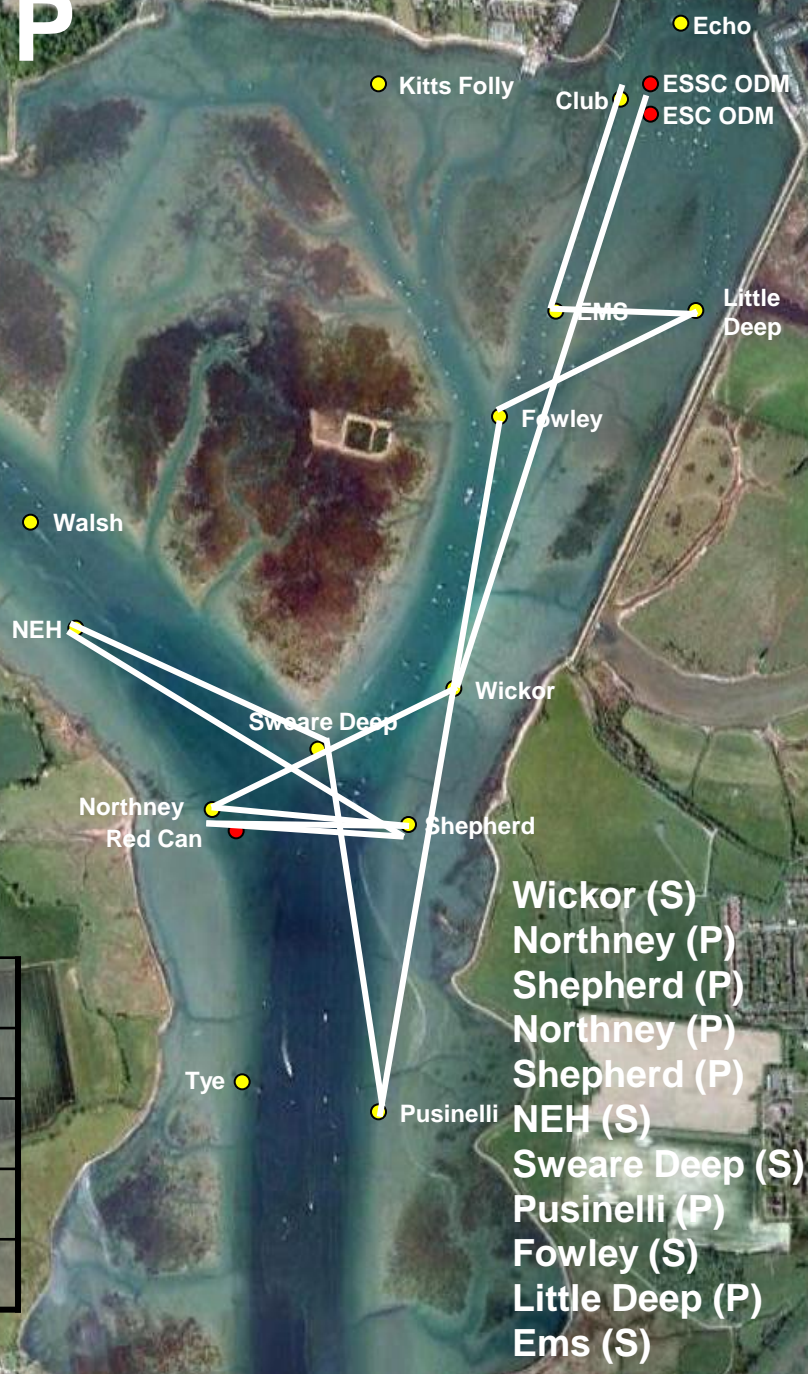
50°49'43.14" N 0°57'02.99" W elev: 0m

© 2011 Infoterra Ltd & Bluesky

Eye alt: 3.48 km

©2010 Google

Direction	E	W
Beat	1.5	1.5
Reach	2.5	2.5
Run	1.5	1.5
Total	5.5	5.5



Course R

Imagery Date: Apr 21, 2007

50°49'43.14" N 0°57'02.99" W elev. 0m

© 2011 Infoterra Ltd & Bluesky

Eye alt 3.48 km

©2010 Google

Direction	WNW
Beat	1.5
Reach	2
Run	1.5
Total	5



- Shepherd (S)
- NEH (S)
- Walsh (S)
- Shepherd (S)
- NEH (S)
- Walsh (S)
- Northney (P)

Course T

Imagery Date: Apr 21, 2007

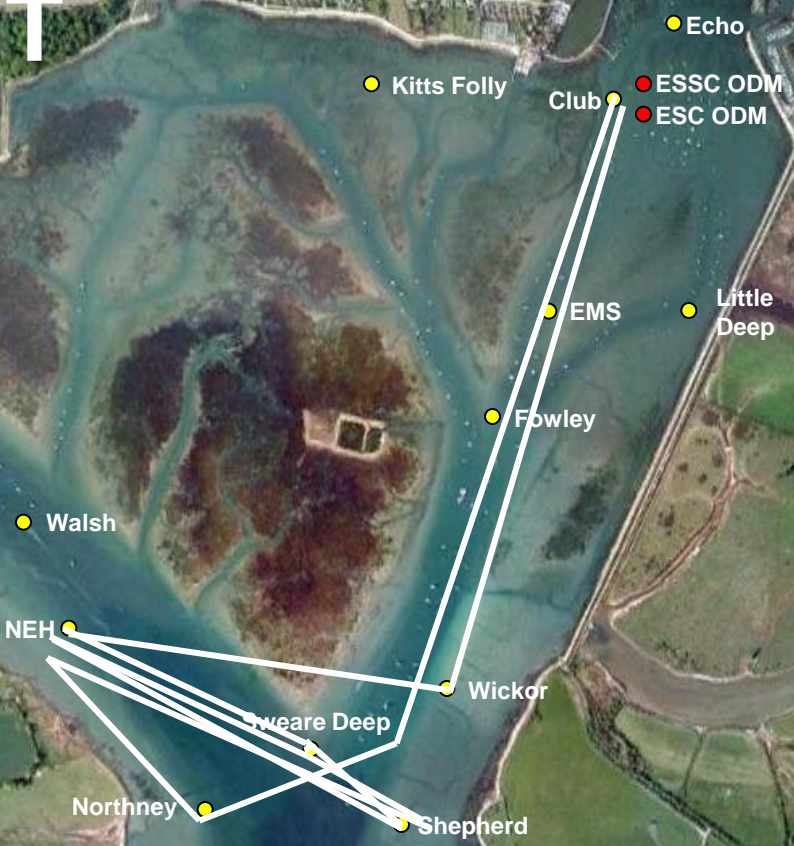
50°49'43.14" N 0°57'02.99" W elev: 0m

© 2011 Infoterra Ltd & Bluesky

Eye alt: 3.48 km

©2010 Google

Direction	ESE	WNW
Beat	1.5	1.5
Reach	2	2
Run	1.5	1.5
Total	5	5



- Wickor (S)
- NEH (S)
- Shepherd (S)
- NEH (S)
- Shearer Deep (S)
- Shepherd (S)
- NEH (S)
- Northney (P)

Tye ●

Pusinelli ●

Marker ●

Course U

Imagery Date: Apr 21, 2007

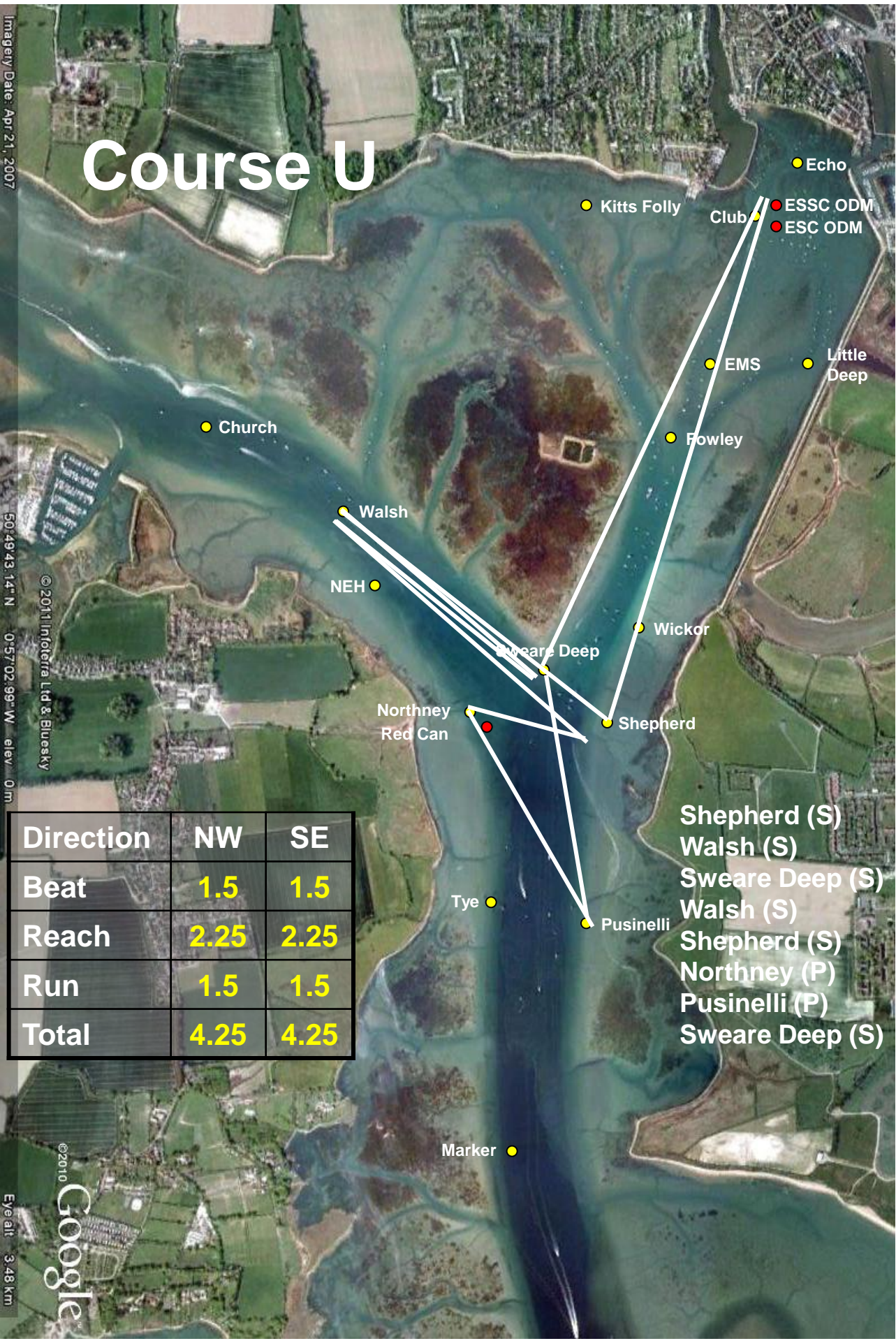
50°49'43.14" N 0°57'02.99" W elev: 0m

© 2011 Infoterra Ltd & Bluesky

Eye alt: 3.48 km

©2010 Google

Direction	NW	SE
Beat	1.5	1.5
Reach	2.25	2.25
Run	1.5	1.5
Total	4.25	4.25



- Shepherd (S)
- Walsh (S)
- Swear Deep (S)
- Walsh (S)
- Shepherd (S)
- Northney (P)
- Pusinelli (P)
- Swear Deep (S)

Course V

Imagery Date: Apr 21, 2007

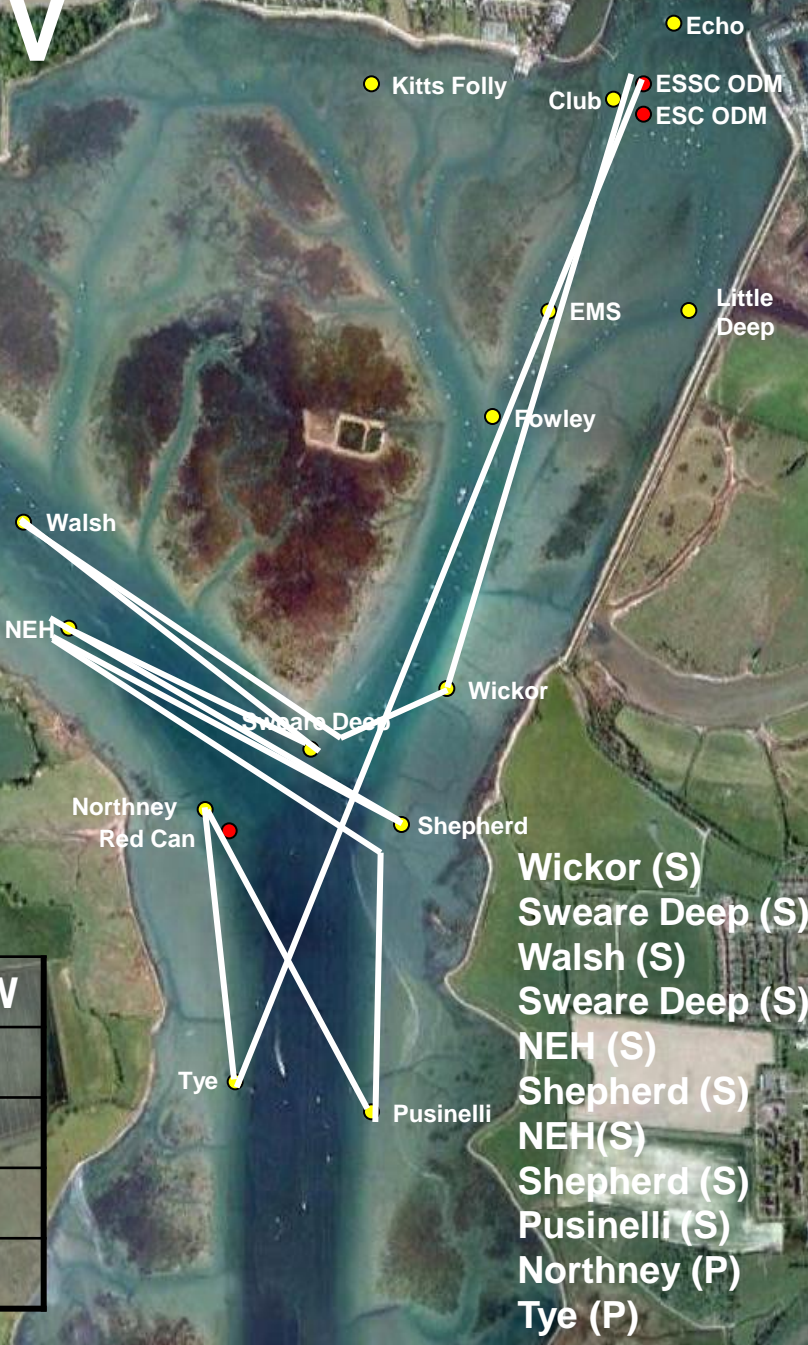
50°49'43.14" N 0°57'02.99" W elev. 0m

© 2011 Infoterra Ltd & Bluesky

Eye alt: 3.48 km

©2010 Google

Direction	NW, WNW
Beat	2
Reach	2.75
Run	2
Total	6.75



Course W

Imagery Date: Apr 21, 2007

50°49'43.14" N 0°57'02.99" W elev. 0m

© 2011 Infoterra Ltd & Bluesky

Eye alt: 3.48 km

© 2010 Google

Direction	N	NNW
Beat	2	2
Reach	1.25	1.25
Run	1.75	1.75
Total	5	5



Marker ●

The Distribution of Courses by Wind Direction

Wind Direction	R	A	G
N		1	
NNE			111
NE			111
ENE		1	
E		11	
ESE			1
SE			1111
SSE			1
S			11
SSW			11111
SW			11111
WSW			1
W		11	
WNW			111
NW			11
NNW		1	

A Summary of Courses by Wind Direction and Distance

Direction	Distances
N	5
NNE	3, 4.2, 6
NE	3, 4.2, 6
ENE	4
E	4,5.5
ESE	5
SE	4, 4.5, 5, 6.5
SSE	4.5
S	4.5, 6.5
SSW	4.5, 6.5, 6, 6.5
SW	3, 4, 4.5, 5.5, 6.5
WSW	3,4.5
W	4, 5.5
WNW	5, 5, 6.75
NW	4.5, 6.75
NNW	5